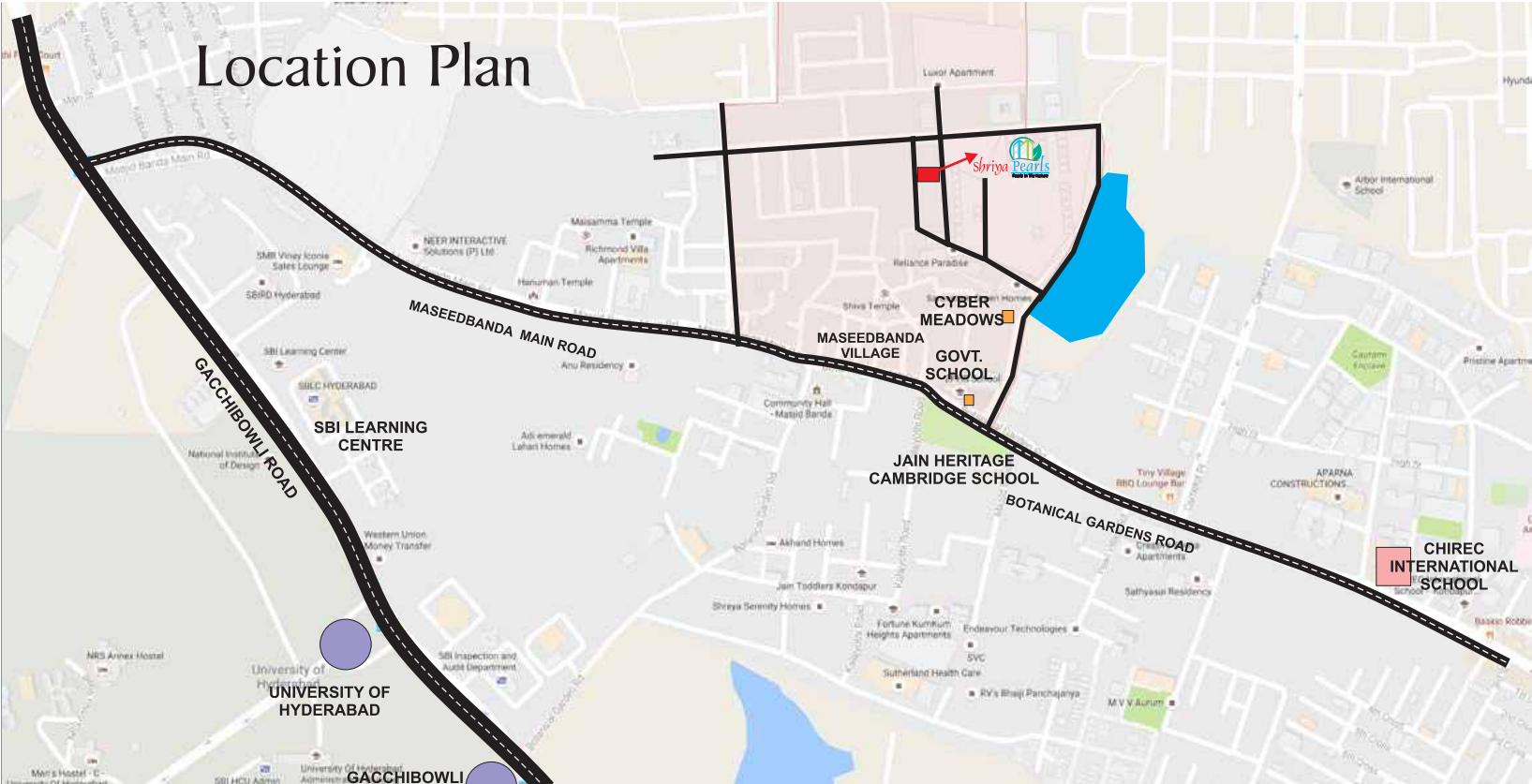




Discover Yourself in world of
Real Comfort





SPECIFICATIONS

FOUNDATION:
RCC framed structure to withstand wind and seismic loads for Zone-II.

SUPER STRUCTURE:
Clay bricks or Fly ash brick in cement mortor.

PLASTERING:
Double coat sponge finish in cm.(1:6) Internal and External.

DOOR FRAMES:
Main Door frames with Wood & Designer Door will be provided. Internal Door frames with Wood & flushed shutters.

FLOORING:
2'x2' vitrified flooring.

ELECTRICAL:
PVC concealed wiring of finecab or equivalent.

TOILETS:
Flooring and walls with ceramic/glazed Tiles of good quality up to 6'0".

WINDOWS:
UPVC frames with plain glass.

COLOURING (INTERNAL):
One coat of primer and two coats of luppum with plastic emulsion paint.

KITCHEN:
Cooking platform in Granite stone with dado in ceramic tiles to a height of 2'0" with Stainless Steel sink.

LIFT:
6 Passenger lift will be provided of reputed make.

GENERATOR:
Back up power for common areas, lift, water pump set & two points in a flat.

SECURITY:
All round Solar Fencing will be provided.

BATHROOM ACCESSORIES:
All fixtures are C.P. Coated from Hindware or equivalent. Sanitary fittings of Hindware / Parryware or equivalent.

PARKING:
One Car parking will be provided for each Flat.

STAIRCASE:
Marble (or) Granite flooring.

PAINTING (EXTERNAL):
One coat of primer, two coats of Birla putty & two coats of weather proof colour.

HARDWARE:
Main Door Fixtures with brass fittings and others with Cylindrical lock.

Note:
Registration, VAT and Service Taxes should be borne by the Purchaser.

Distances:

Immunology Campus	0.5 Km
Central University	1 Km.
Botanical Gardens	2 Kms.
Chirec Public School	1 Kms.
Gachibowli `X` Road	3.5 kms.
Raheja IT Park	3 kms.
DLF	3.5 kms.
Inorbit Mall	5.5 kms.
Gachibowli Stadium	3 kms.
Cyber Towers	6 kms.
Microsoft	7 kms.
Delhi Public School	9 kms.
Financial Dist.	3.5 kms.
Oakridge School	8 kms.
Hitech City Rly. Station	8 kms.



Promoted By



Shriya Enclave,
6-3-354/1/2, Hindi Nagar,
Panjagutta, Hyderabad - 500 082.
Ph: 040-66562641 & 66562642
Fax: 040-66562645
support@shriyaconstruction.com
www.shriyaconstruction.com

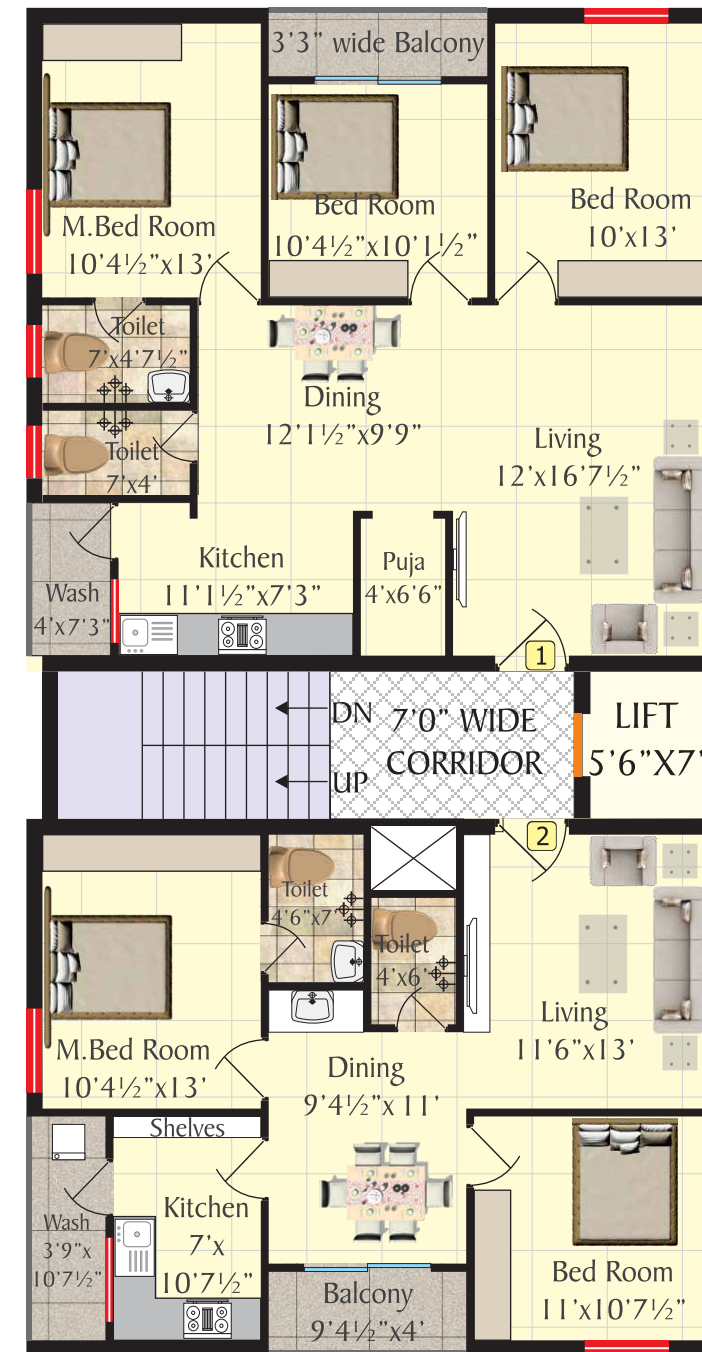
Site Address
Plot No.331 & 338,
Kondapur, Hyderabad.



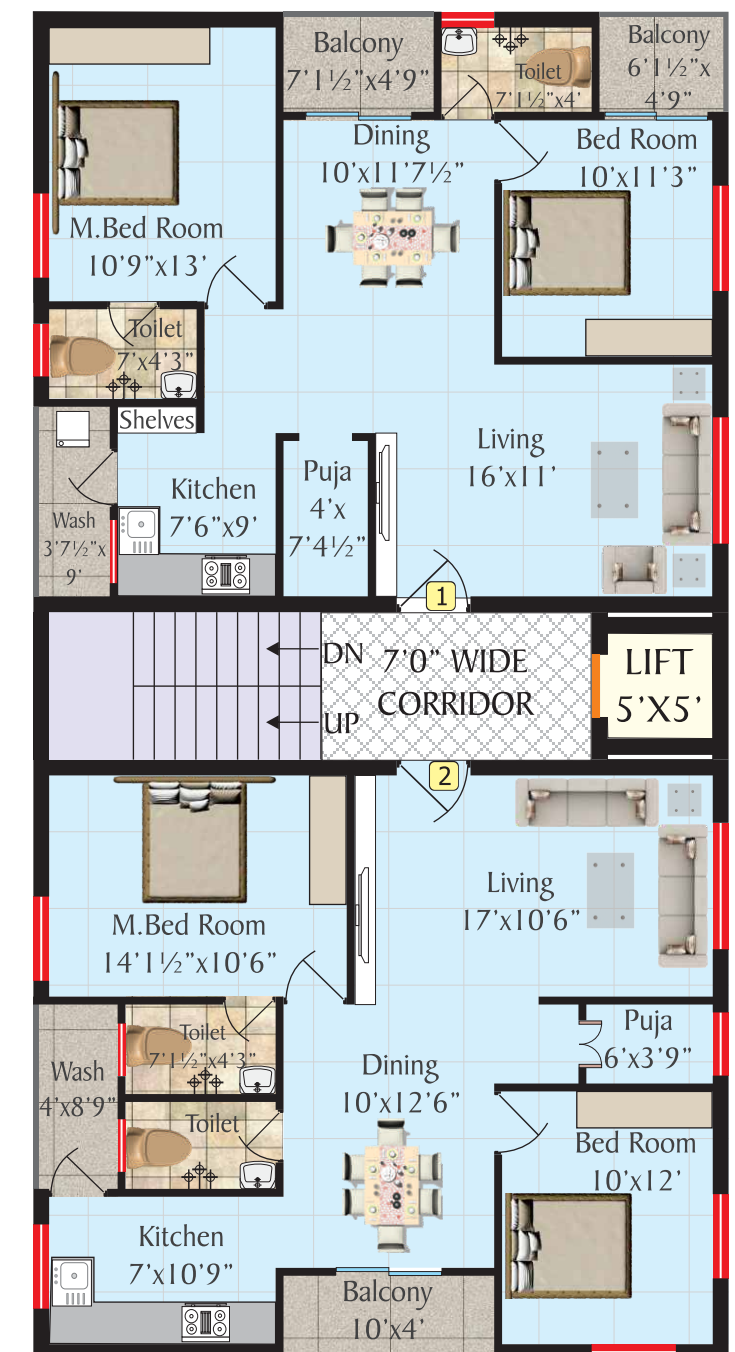
Shriya Pearls are sparkling Pearls at Kondapur, the most exciting residential environment with the new modern amenities and nature all around. Shriya Pearls has surrounded by green meadows to have a life in the nature's lap. Shriya Pearls ensures peace of mind with secured entries, parking and it has wide Open Spaces, Luxurious finishes & amenities.

This perfect and quality venture comes from SHRIYA CONSTRUCTIONS, which ensures utmost quality standards for each and every home it builds. Shriya Pearls is a new address of the truly distinguished elite within serene environments in the heart of Cyber City.

----- WEST ROAD -----



Block - B



Block - A

----- EAST ROAD -----

TYPICAL FLOOR PLAN



Master Plan

WEST ROAD

1 3 BHK
1350 Sft.

2 2BHK
1100 Sft.

1 2BHK
1200 Sft.

2 2BHK
1200 Sft.

EAST ROAD

Block - B
Block - A